

# Vienna Early References

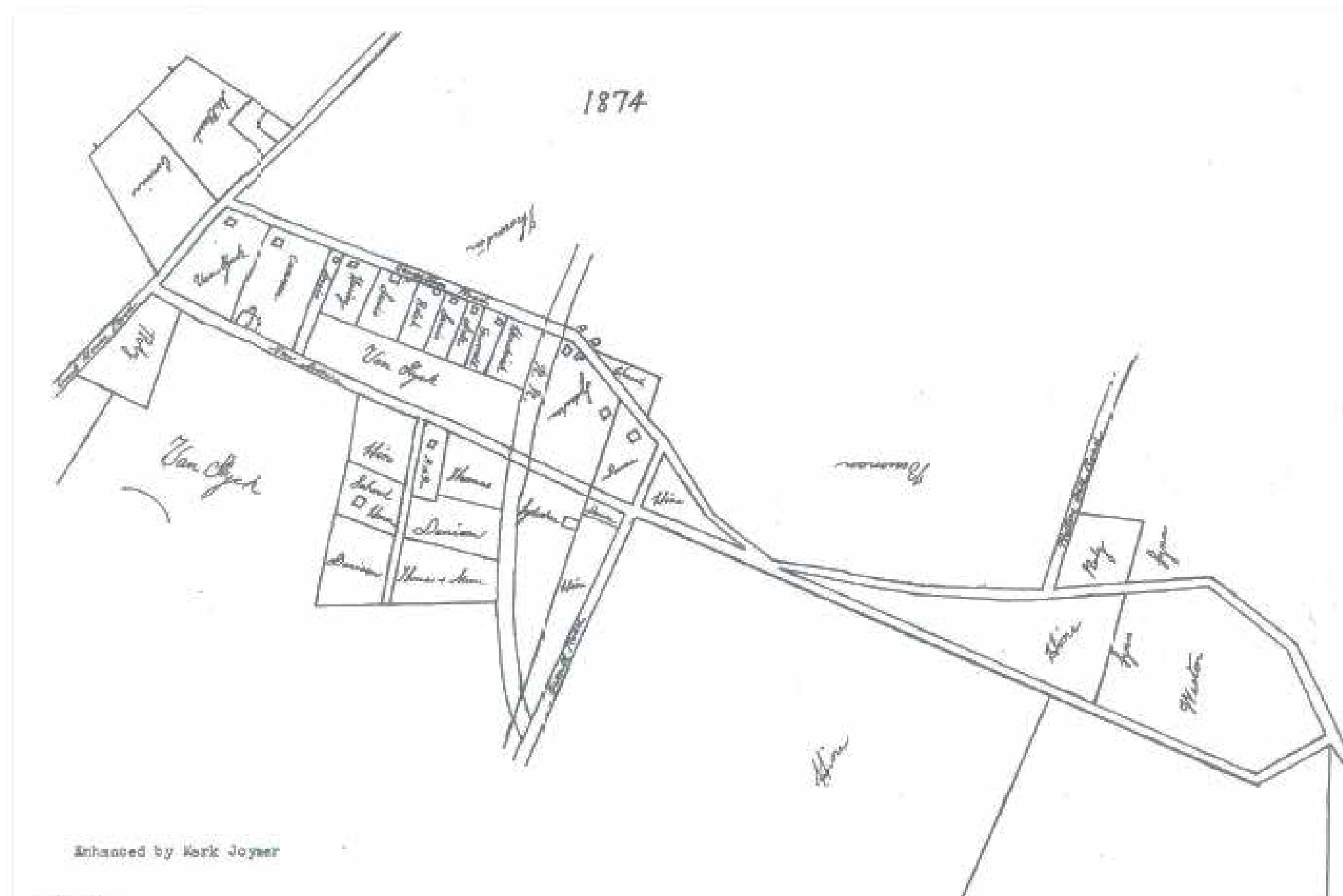


Fig. 25-8  
Farr's 1874 Plat of Maple Avenue

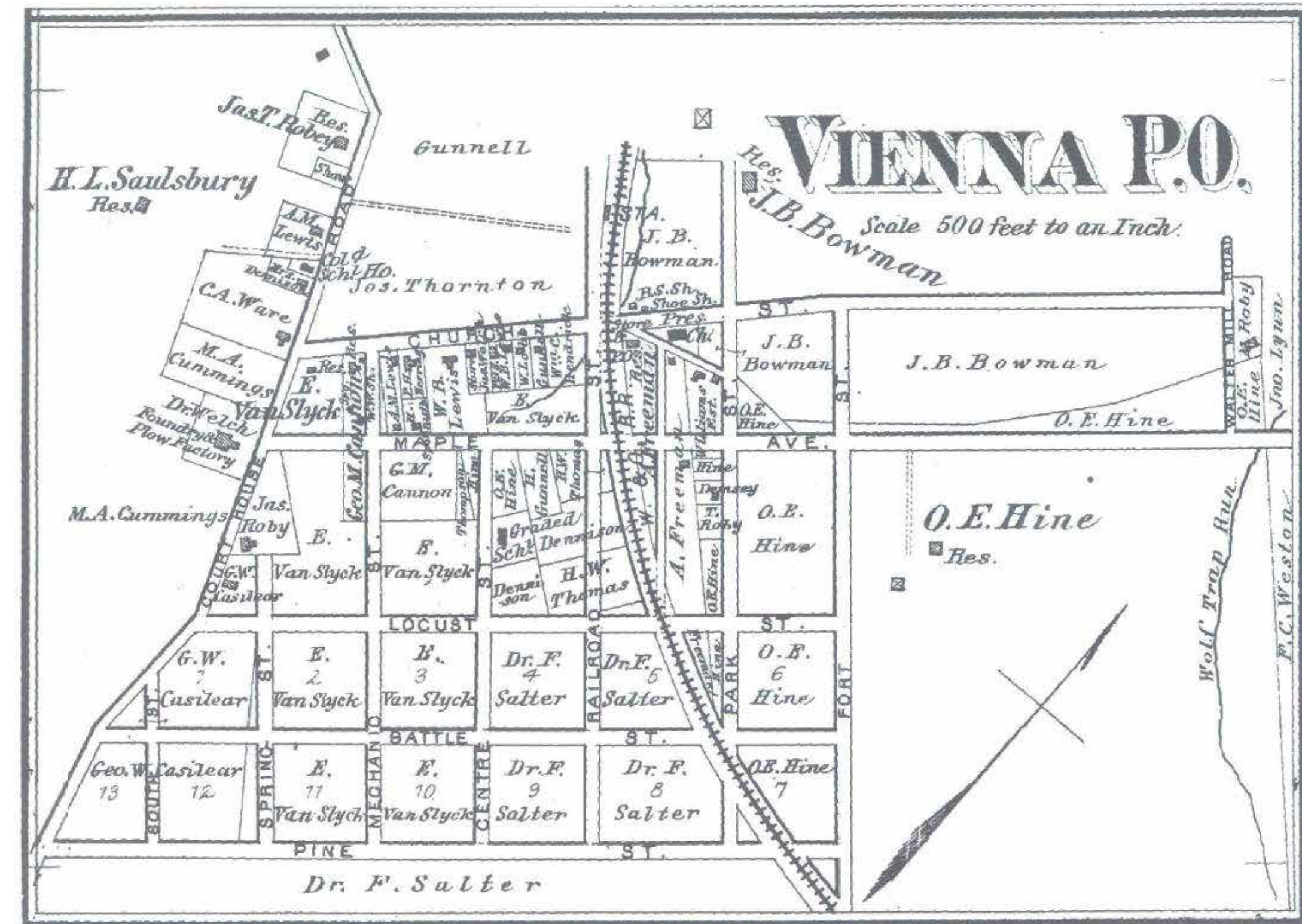
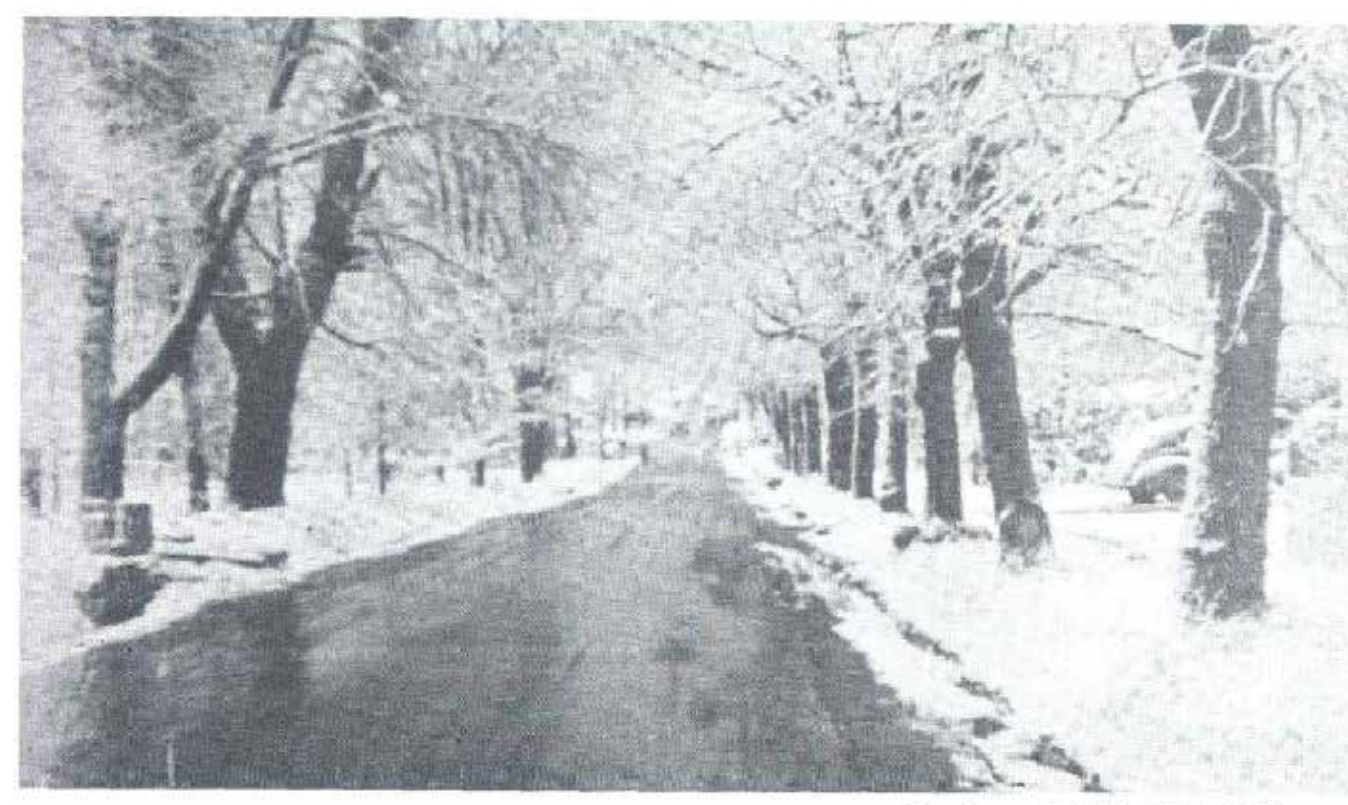


Fig. 25-11  
G.M. Hopkins Map of Vienna 1879



Fig. 39-28  
Courtesy of Dr. David Richmond



Courtesy of Adele Wright George

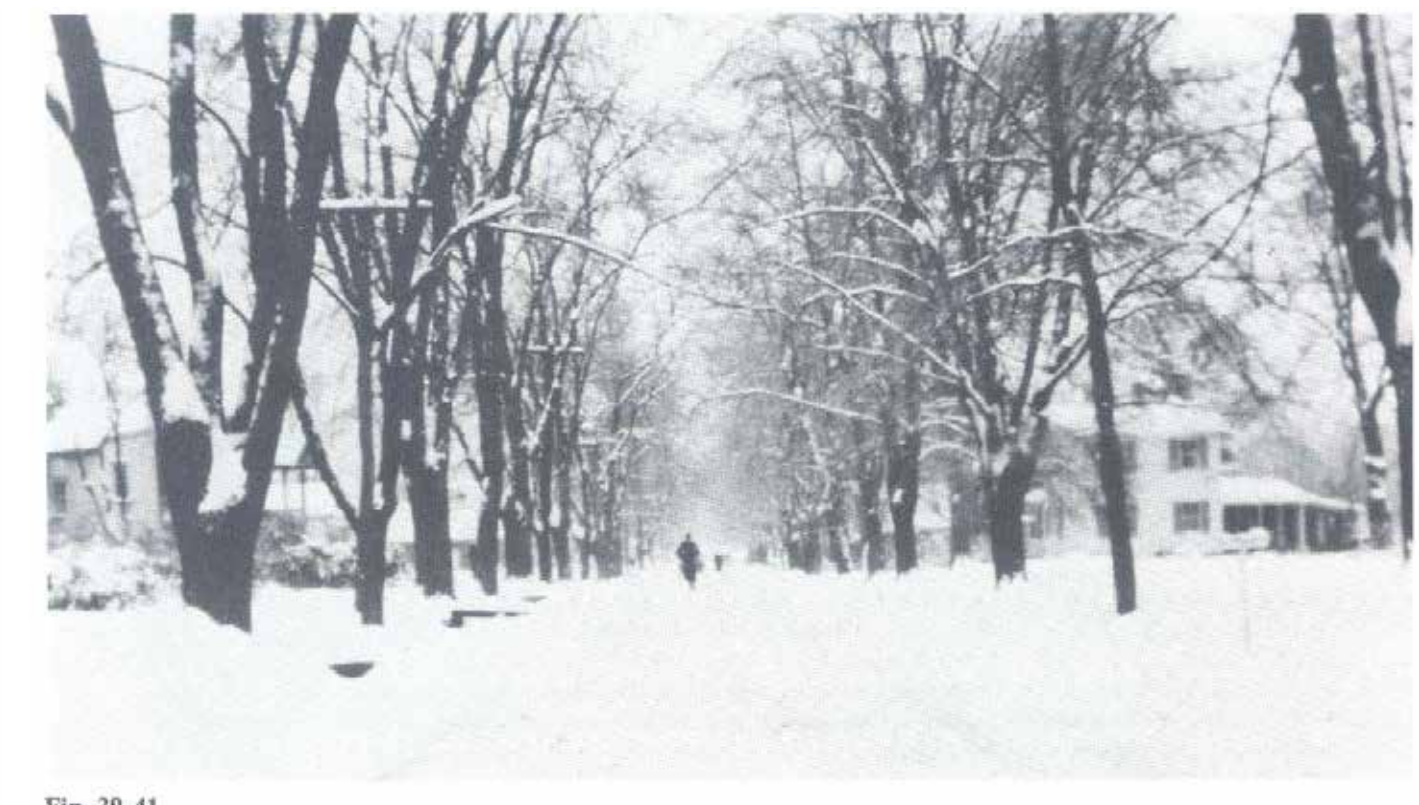


Fig. 39-41  
Church Street between Lawyers Road and Center Street, N.W., c1940.



1949

Maple Avenue

Church Street



Fig. 39-80  
A scene on Maple Avenue, W., about 1958, before it was widened. This shows the "Swap Shop" sign on the left, operated by Mr. and Mrs. Henry Ware. DeHart's house and barn are to the right. Jades Shopping Center now occupies the area to the immediate right, and the Maple Professional Park is to the left.



1962



91 at Home—1884



Fig. 39-10  
c1915  
Old Dominion Station, Vienna, Va.



Fig. 38-2  
Faulkner Building—1930s.

Courtesy of Mr. & Mrs. Robert Hunter